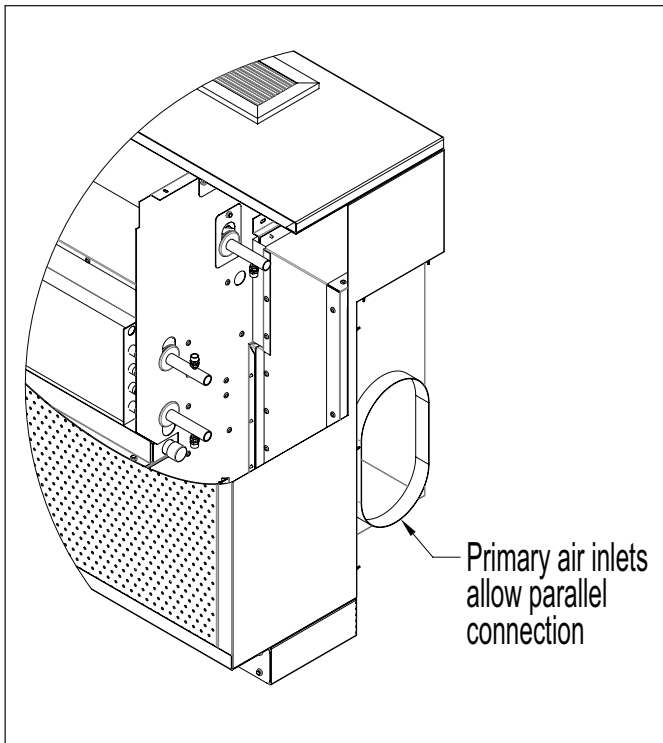
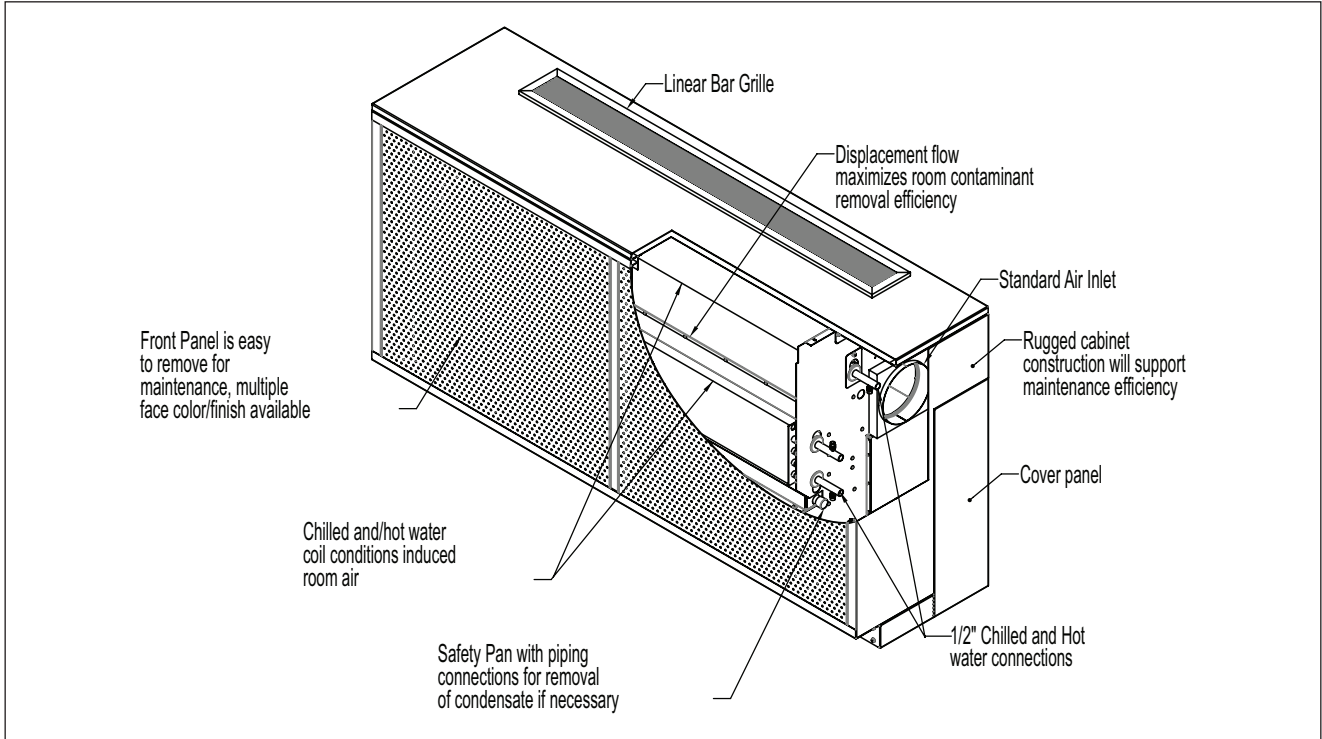


DIMENSIONS

chilled beams

TAO UNIT DIMENSIONS

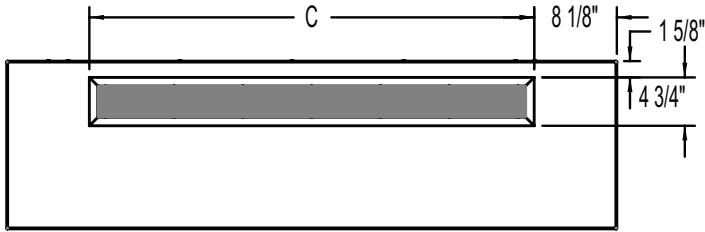


All units are shipped as right air inlet connecting. To modify the unit to allow a left side air connection, simply remove the cover panel and cap from the left side and replace them on the right. For center units in series, remove the cover panel and cap from the left side and discard.

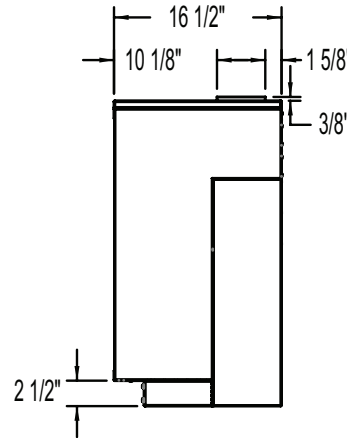
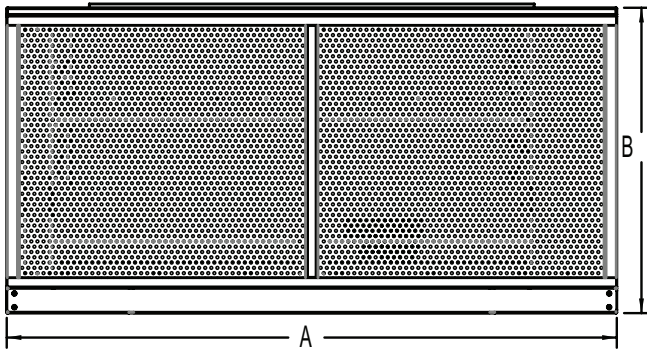
DIMENSIONS

Redefine your comfort zone.™ | www.titus-hvac.com

TAO UNIT DIMENSIONS

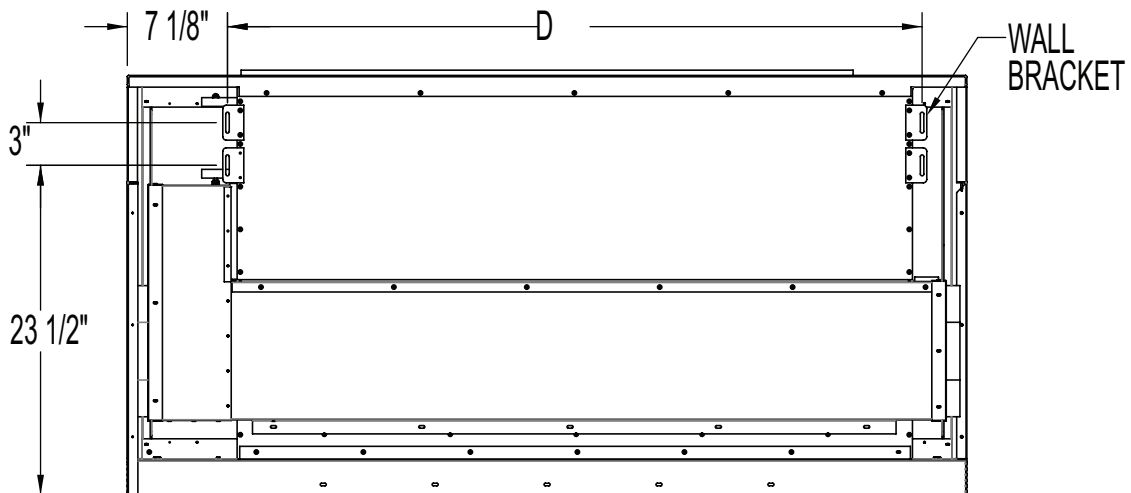


Unit	Dimensions		
	A	B	C
5 ft	60	30	43 3/4
6 ft	72	30	55 3/4



TAO UNIT DIMENSIONS

Wall Mounting

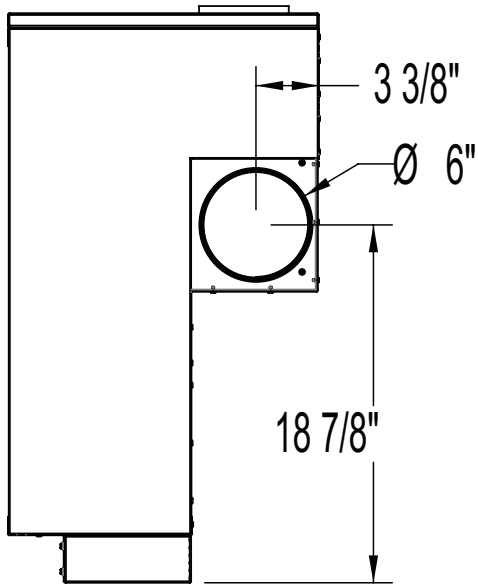


Unit	D
5 ft	49 1/8
6 ft	61 1/8

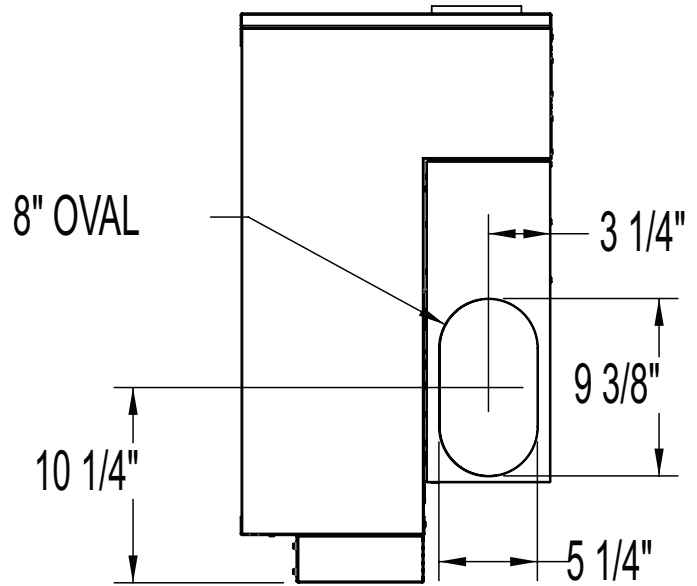
DIMENSIONS

DUCT CONNECTION LOCATION

6 inch round (For individually ducted installations)



8 inch oval (For multi-unit installations)



WATER COIL AND CONDENSATE CONNECTION LOCATIONS

